

### Stützpunktgruppe Süd • Bangsbo Fort • Pikkerbakken

#### Regelbau, mandskab:

R622, 20 mand .....	6 stk
R628, 10 mand .....	4 stk
R635, 10 mand .....	2 stk

#### Regelbau, andre formål:

R621, Brøndbunker.....	1 stk
R658, Brøndbunker.....	1 stk
R638, Felthospital.....	1 stk
FI245 Maskinbunker, El-anlæg .....	1 stk

#### Regelbau, Ammunition & Skyts:

M134, Ammo .....	1 stk
M145, Ammo .....	1 stk
FI246, Ammo .....	2 stk
L409A, Flakbatteri, 40 mm .....	1 stk
M270, Skytsbunker, 150 mm.....	3 stk
FI243, Flakbatteri, 105 mm.....	4 stk

#### Regelbau, Kommando:

M152, MarKo .....	1 stk
FI241 (Flak-kommando) .....	1 stk

#### Regelbau, Ildleder & Radar:

V174, Radar, Würzburg Riese .....	1 stk
M162a, Ildleder, kystbatteri .....	1 stk
FI244, Ildleder, Flak .....	1 stk

#### Andre bunkertyper:

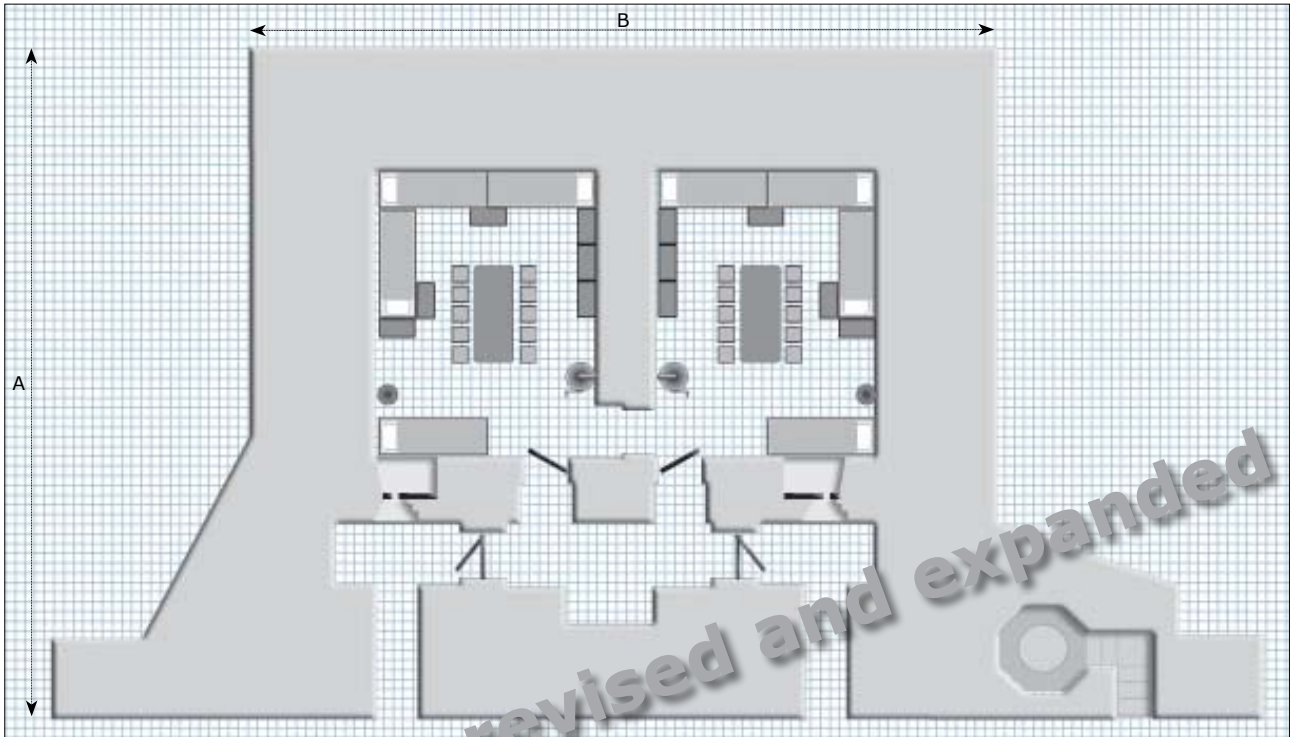
Bauform 201, Ringstilling .....	8 stk
Bauform 207, Morter.....	4 stk
Siegfried, 6 mand .....	4 stk

Bemærk at ikke alle nævnte bunkere er vist på tegningen. Nogle ligger på marinens område, nogle på vejen til udsigtspunktet Pikkerbakken og nogle i bevoksningen omkring fortet. Ligeledes er nogle overdækkede bunkere ikke medtaget.



## REGELBAU 622 DOBBELGRUPPEUNTERSTAND

TWIN GROUP BUNKER (20 MEN)



### Technical data.

Size (a x b)	1150 cm x 1260 cm
Height approx:	500 cm
Concrete:	660 m <sup>3</sup>
Reinforcement steel:	
Heating:	Festungssofen WT80
Ventilation:	Manual, with replacable filter

Bar- or wooden door	1
Machine gun	2
Panser door (3 cm thick)	3
Airlock	4
Bunks (10 per room)	5
Double closets	6
Ventilation	7
Oven for heating (gas proof)	8
Machinegun post (Tobruk)	9

The R622 was the home of two standard groups, each consisting of 10 men led by a corporal. Each group had its own room with an oven for heating and providing each group member with a bed, a closet and a stool at the table.

Along with the 621, this bunker is the most common Regelbau construction in Denmark

The bunker was cast from 660 m<sup>3</sup> of steel-reinforced concrete with walls and ceiling two meters thick, providing protection against a direct hit from a 1000 lbs bomb or artillery shells up to 230 mm in caliber.

The bunker was sealed against war gasses, comprising an airlock, gas valves and a manually operated ventilation system.

Steel doors, 3 cm thick